

ACTION	DATE	BY	DESCRIPTION
A	04-21-99	ARS	RELOCATE TOILET FIXTURES
B	05-03-99	CMC	NEW WINDOWS/DOORS/TRP
C	06-14-99	ARS	ADD WINDOW TYPES 7 & 8
D	06-21-99	JC	MISC. REVS

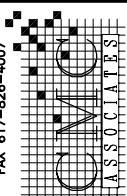
CHANNEL FISH
NEW PROCESSING FACILITY
SOUTH BOSTON, MASSACHUSETTS



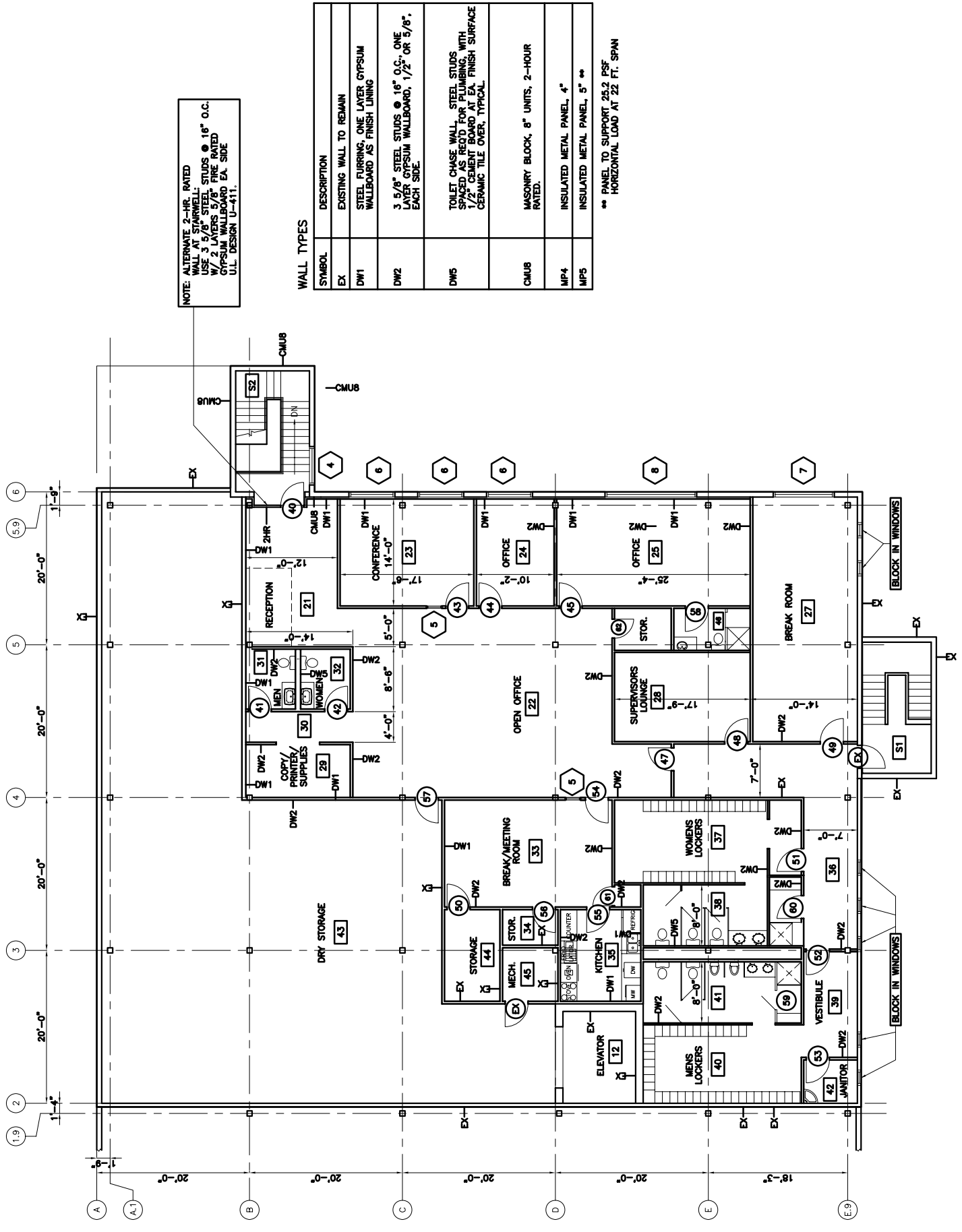
SECOND FLOOR PLAN

D.E.C., INC.
DESIGN ENGINEERING
CONSULTANTS, INC.
720 WASHINGTON STREET
OXFORD BUILDING
HANOVER, MA 02339
TEL 617-826-4550
FAX 617-826-0825

CMC Associates
ARCHITECTURE, ENGINEERING
& CONSTRUCTION
R/R THE
FOOD INDUSTRY
720 WASHINGTON STREET
OXFORD BUILDING
HANOVER, MA 02339
TEL 617-826-7899
FAX 617-826-4007



SCALE: 1/8" = 1'-0"
DATE: 03-09-99
DRAWN BY: PK
DRAWING NO. A-2
REV. NO. 0
97010



NOTE: ALTERNATE 2-HR. RATED WALL AT STAIRWELL. USE 3/8" STEEL STUDS @ 16" O.C. WITH 2" GYPSUM WALLBOARD EX. SIDE. ULL DESIGN U-411.

WALL TYPES

SYMBOL	DESCRIPTION
EX	EXISTING WALL TO REMAIN
DW1	STEEL FLOORING, ONE LAYER GYPSUM WALLBOARD AS FINISH LINING
DW2	3/8" STEEL STUDS @ 16" O.C. ONE LAYER GYPSUM WALLBOARD, 1/2" OR 5/8" EACH SIDE
DW5	TOILET CHASE WALL. STEEL STUDS SPACED AS REQUIRED FOR PLUMBING WITH 1/2" CEMENT BOARD AT EA. FINISH SURFACE CERAMIC TILE OVER, TYPICAL.
CMU8	MASONRY BLOCK, 8" UNITS, 2-HOUR RATED.
MP4	INSULATED METAL PANEL, 4"
MP5	INSULATED METAL PANEL, 5"

** PANEL TO SUPPORT 25.2 PSF HORIZONTAL LOAD AT 22 FT. SPAN