

Industrial
and Commercial
Real EstateP.O. Box 171220
Boston, MA 02117
www.permanser.comTel: 617.424.0040
Fax: 617.424.0080
Mobile: 617.840.1484

RETAIL

WHOLESALE & DISTRIBUTION

DEVELOPMENT



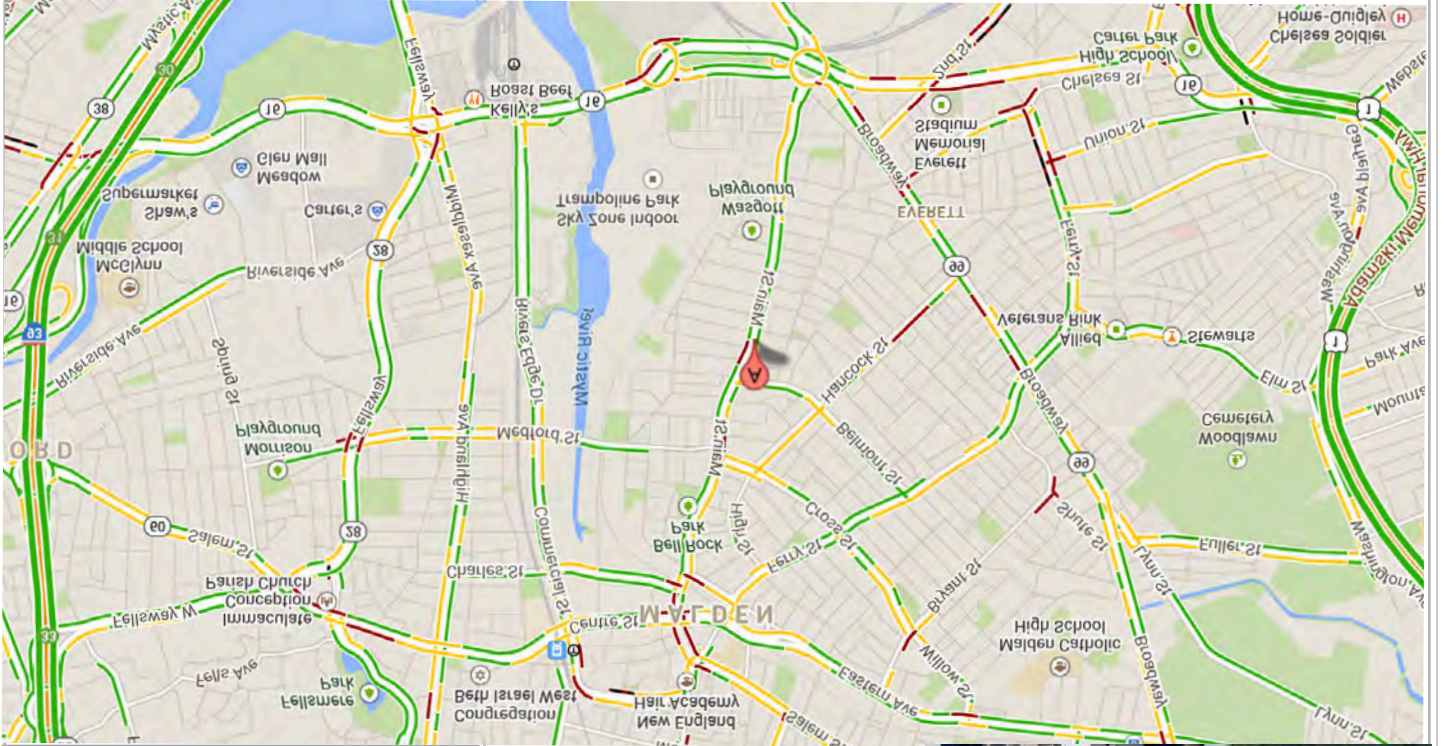
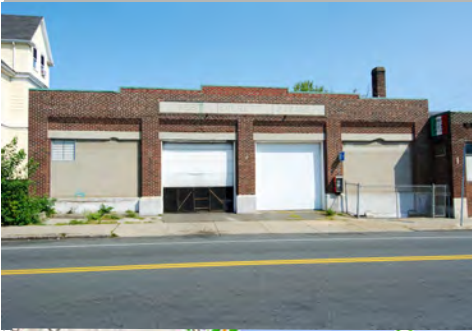
Exclusive Broker: Joel B. Miller
Office: 617-424-0040
Cell: 617-840-1484
Fax: 617-424-0080
Email: joel@permanser.com
www.permanser.com

SALE or LEASE**\$799,000.00****371-375 Main Street****Everett, MA 02149****±11,056 sf plus a ±4,189 s.f. Drive-In Lower Level**

Building: 11,056 sf plus a 4,189 drive in basement.
Located just off of Route 16 on Main Street in Everett.
Currently being used as a Wholesale Bakery.
Great Redevelopment Opportunity.

SIMPLY A GREAT LOCATION LOCATION LOCATION LOCATION

- Zoning: (Business District)
- Very Functional
- Redevelopment of the site for those who like to create.
- High Visibility
- 2 Drive In Doors
- This property would be great for any owner / occupant that needed to service the core city.
- Accessible by MBTA
- Accessibility to Quality Workers
- PRICED TO SELL



Exclusive Broker: Joel B. Miller
Office: 617-424-0040
Cell: 617-840-1484
Fax: 617-424-0080
Email: joel@permanser.com
www.permanser.com

Perishable Management Services
P.O. Box 171220
Boston, MA 02117
USA

Industrial Real Estate
Brokerage Services

*It is not often that a property of this type comes onto the market for **Sale or Lease**. Whether you are an **Owner/Occupant** or an **Investor** this property is truly a remarkable **opportunity and value** for the right Buyer. Timing, Location, Availability and a more than fair price.*

\$799,000.00



- *2014 Real Estate Taxes \$19,171.03**
- *City Water & Sewer**
- *Rubber Roof**
- *Natural Gas Heat**
- *Office (HVAC)**
- *3 phase service**

The information contained herein has either been given to us by the owner of the property or obtained from sources that we deem reliable. We have no reason to doubt its accuracy but we do not guarantee it. This information is subject to change and this offering can be withdrawn without notice