

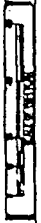
11/17/57

SHIRLEY STREET

CLIFTON STREET

LESTER STREET

PLOT PLAN
 LAND IN ROXBURY, MASS.
 SCALE 20 FT. = 1" OCT. 1957
 JOHN F. GAGE & CO.
 115 STATE STREET



LOT "A" 5052 SQ. FT. ±
 LOT "B" 15800 SQ. FT. ±
 LOT "C"

2 STORY BRICK

LOT "B"
 LOUIS AND BELLA WINER
 ONE STORY BRICK

2 STORY BRICK

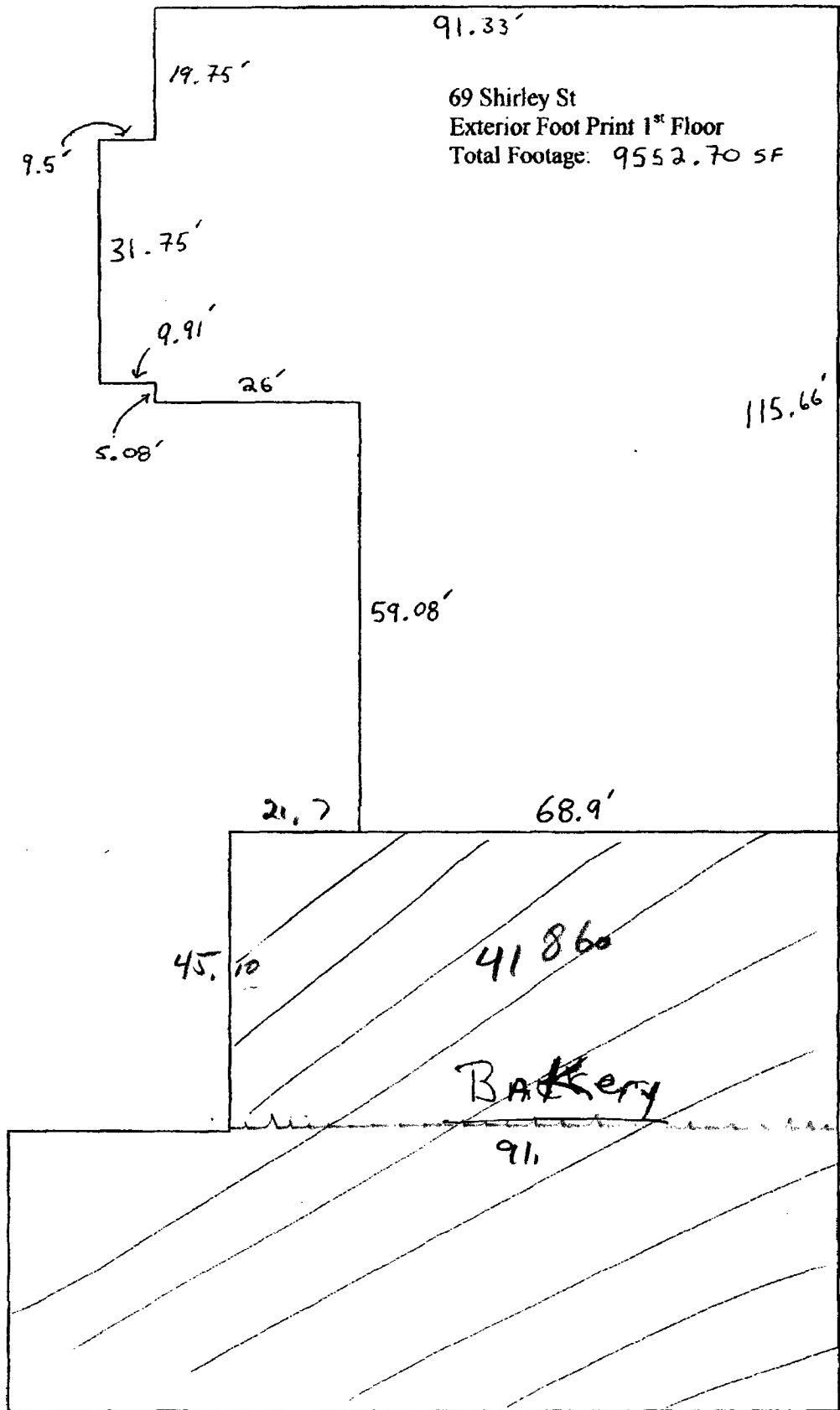
LOT "A"
 4 STORY BRICK
 LOUIS AND BELLA WINER

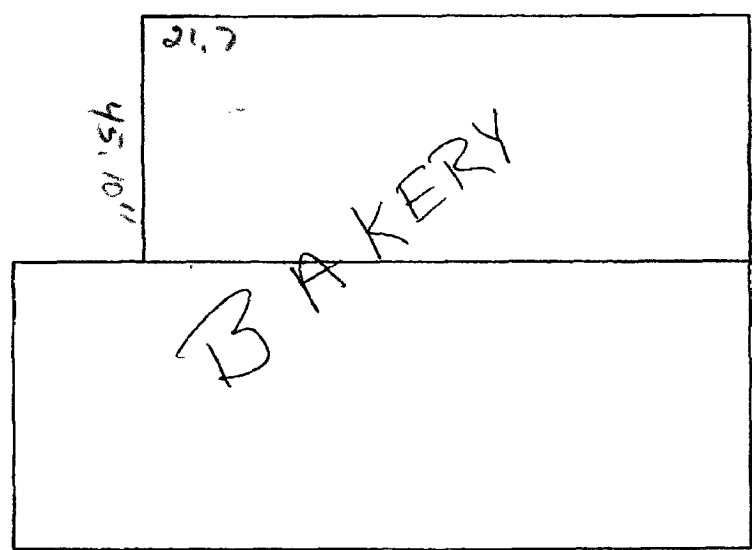
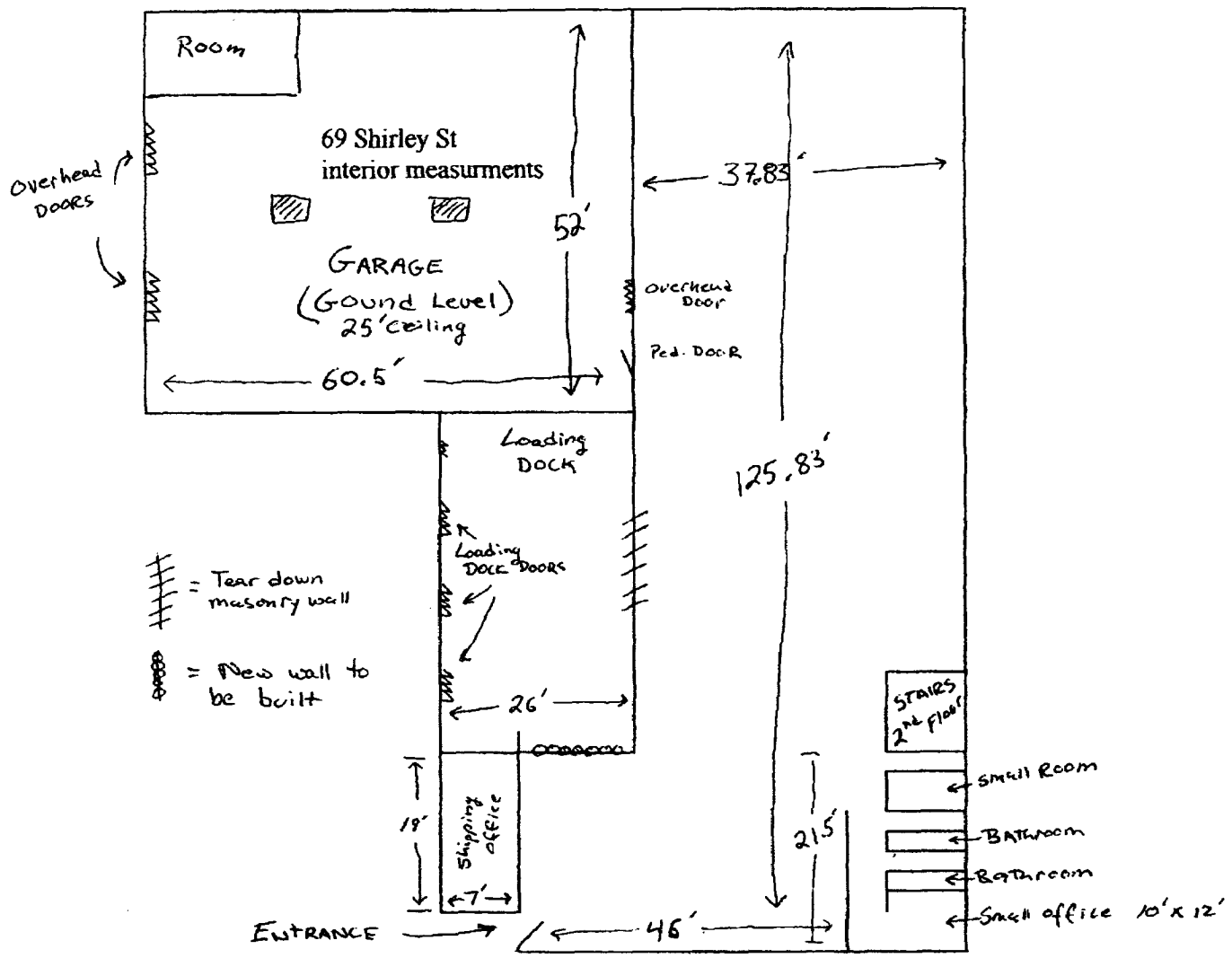
LOT "C"
 LOUIS WINER
 2 STORY BRICK

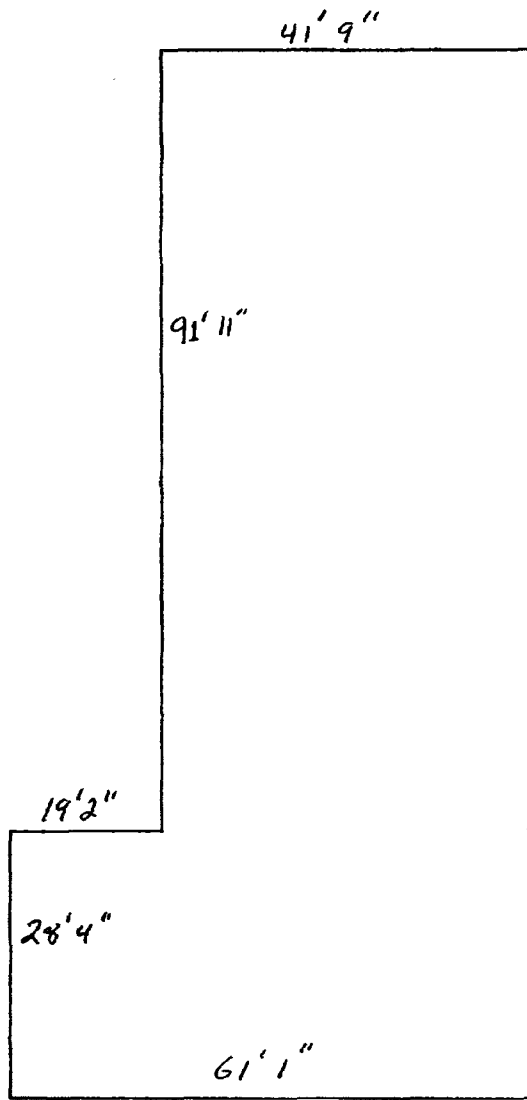
RIGHT OF WAY

DRAIN LINE

WATER MAIN







69 Shirley St
2nd Floor

Exterior Measurements

50' 0"

121' 4"