

NOTES

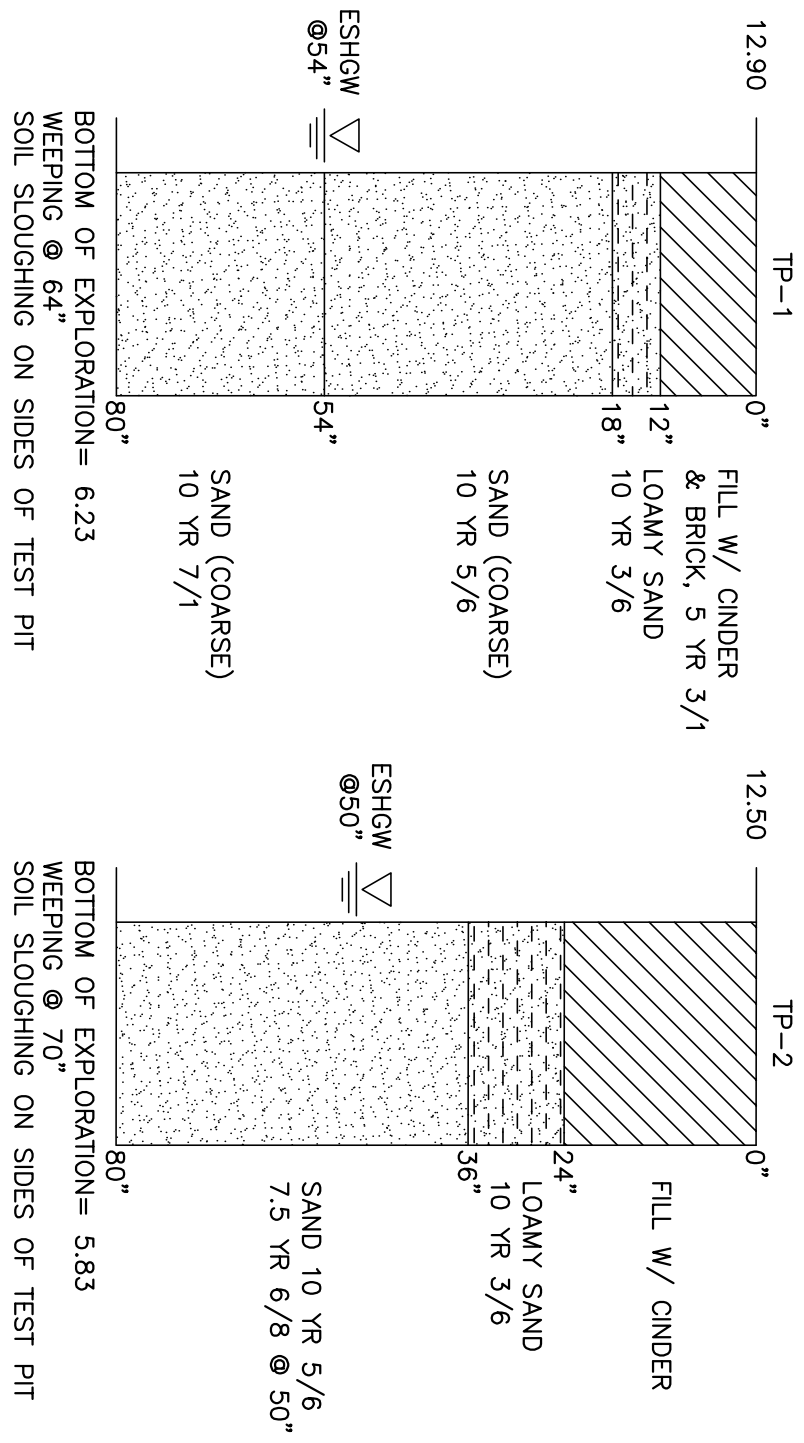
- EXISTING DRAINAGE STRUCTURES AND OTHER UNDERGROUND UTILITIES WITHIN THE SITE SHALL BE REMOVED AND/OR ABANDONED UNLESS OTHERWISE NOTED.
- DRAINAGE: ALL DRAIN PIPES SHALL BE 10" PVC SCH 40 UNLESS OTHERWISE NOTED. PIPES SHALL BE LAID AT 0.5% SLOPE (MIN).
- EXISTING SERVICES: THE EXISTING SANITARY SEWER, DOMESTIC WATER, FIRE PROTECTION AND ELECTRICAL SERVICES ARE TO REMAIN IN SERVICE.
- ELECTRICAL, CABLE & TELEPHONE SERVICES AS SHOWN ON PLAN ARE APPROXIMATE ONLY.
- THE CUTTING AND GAPPING OF ALL UTILITIES SHALL BE AT THE MAINS AS PER THE INSTRUCTIONS FROM THE RESPECTIVE UTILITY COMPANY OR MUNICIPAL DEPARTMENT.
- THE CONTRACTOR IS RESPONSIBLE FOR VERIFYING THE EXACT LOCATION OF EACH UTILITY.
- ALL WORK PERFORMED AS PART OF THIS PROJECT SHALL CONFORM TO THE STANDARD SPECIFICATIONS OF THE CITY OF SOMERVILLE, DEPT. OF PUBLIC WORKS AND ANY OTHER AGENCY WITH AUTHORITY IN THIS AREA.
- THE CITY OF SOMERVILLE MUNICIPAL UTILITIES (WATER, SEWER & DRAIN) ARE NOT PART OF DIG-SAFE. CONTACT THE CITY OF SOMERVILLE FOR THE MARKING OF SOMERVILLE MUNICIPAL UTILITIES. CONTACT DIG-SAFE AT 1-888-344-7233 OR 1-800-322-4844 AT LEAST 72 HOURS PRIOR TO EXCAVATION.
- A DYE TEST SHALL BE PERFORMED BY A CITY OF SOMERVILLE INSPECTOR PRIOR TO THE ISSUANCE OF AN OCCUPANCY PERMIT.
- THE CITY OF SOMERVILLE RESERVES THE RIGHT TO INSPECT ALL PRIVATE FACILITIES DISCHARGING TO MUNICIPAL FACILITIES.
- DURING EXCAVATION AND PROTECTION OF PIPES AND STRUCTURES, TRENCHES MUST BE ADEQUATELY BRACED AND PROTECTED AGAINST CAVE-IN.
- ALL PLUMBING FIXTURES BELOW THE RIM ELEVATION OF THE SEWER MANHOLE CONNECTED TO SEWER MAIN SERVING THE FIXTURES SHALL BE CONSIDERED AS BEING SUBJECT TO BACKFLOW AND SHALL BE SUPPLIED WITH BACKFLOW VALVES SPECIFIED BY PLUMBING ENGINEER.
- FIRE SUPPRESSION SYSTEM SHALL BE DESIGNED BY OTHERS, INCLUDING THE SIZE OF INCOMING PIPE FROM WATER MAIN.

STORMWATER SYSTEM MAINTENANCE PLAN

- PAVED AREAS SHALL BE SWEEP CLEAN IN EARLY SPRING, SUMMER, AND EARLY FALL SEASONS ON AN ANNUAL BASIS.
- CLEANING CATCH BASINS AND MANHOLES SHALL BE PERFORMED ANNUALLY AT THE ONSET OF THE SPRING SEASON.
- SNOW REMOVAL FROM PAVED AREAS SHALL BE REMOVED AND PLACED ON GRASSSED OR PERVIOUS AREAS IF FEASIBLE.
- IF A DE-ICING COMPOUND IS REQUIRED ON PAVED PARKING AREAS, A CALCIUM MAGNESIUM ACETATE (CaCl₂) SHOULD BE USED.

LEGEND

- | | | | |
|---|-----------------------|---|----------------------------|
| □ | BOUND FOUND | ⊙ | WATER MANHOLE |
| ○ | IRON ROD FOUND | ⊙ | CABLE TELEVISION MANHOLE |
| ○ | DRILL HOLE FOUND | ⊙ | MANHOLE - UNKNOWN TYPE |
| ○ | CHAIN LINK FENCE | ⊙ | SANITARY SEWER METAL COVER |
| ○ | STOCKADE FENCE | ⊙ | CATCH BASINS |
| ○ | SANITARY SEWER | ⊙ | UTILITY POLE |
| ○ | DRAIN LINE | ⊙ | TROLLEY POLE |
| ○ | WATER LINE | ⊙ | LIGHT POLE |
| ○ | GAS LINE | ⊙ | ELECTRIC HANDHOLE |
| ○ | E | ⊙ | WATER GATE |
| ○ | T | ⊙ | WATER VALVE |
| ○ | TELEPHONE LINE | ⊙ | WATER SPRINKLER HEAD |
| ○ | CABLE TELEVISION LINE | ⊙ | GAS GATE |
| ○ | OVERHEAD WIRES | ⊙ | TOP OF WALL |
| ○ | OHW | ⊙ | SIGN |
| ○ | SANITARY MANHOLE | ⊙ | BOTTOM OF WALL |
| ○ | DRAIN MANHOLE | ⊙ | BOTTOM OF PAVEMENT |
| ○ | ELECTRIC MANHOLE | ⊙ | |
| ○ | TELEPHONE MANHOLE | ⊙ | |
| ○ | TEST PIT | ⊙ | |

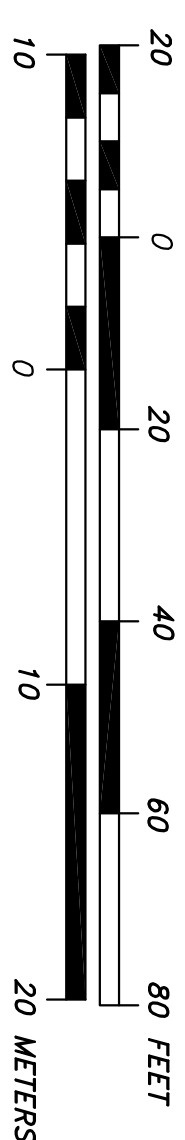
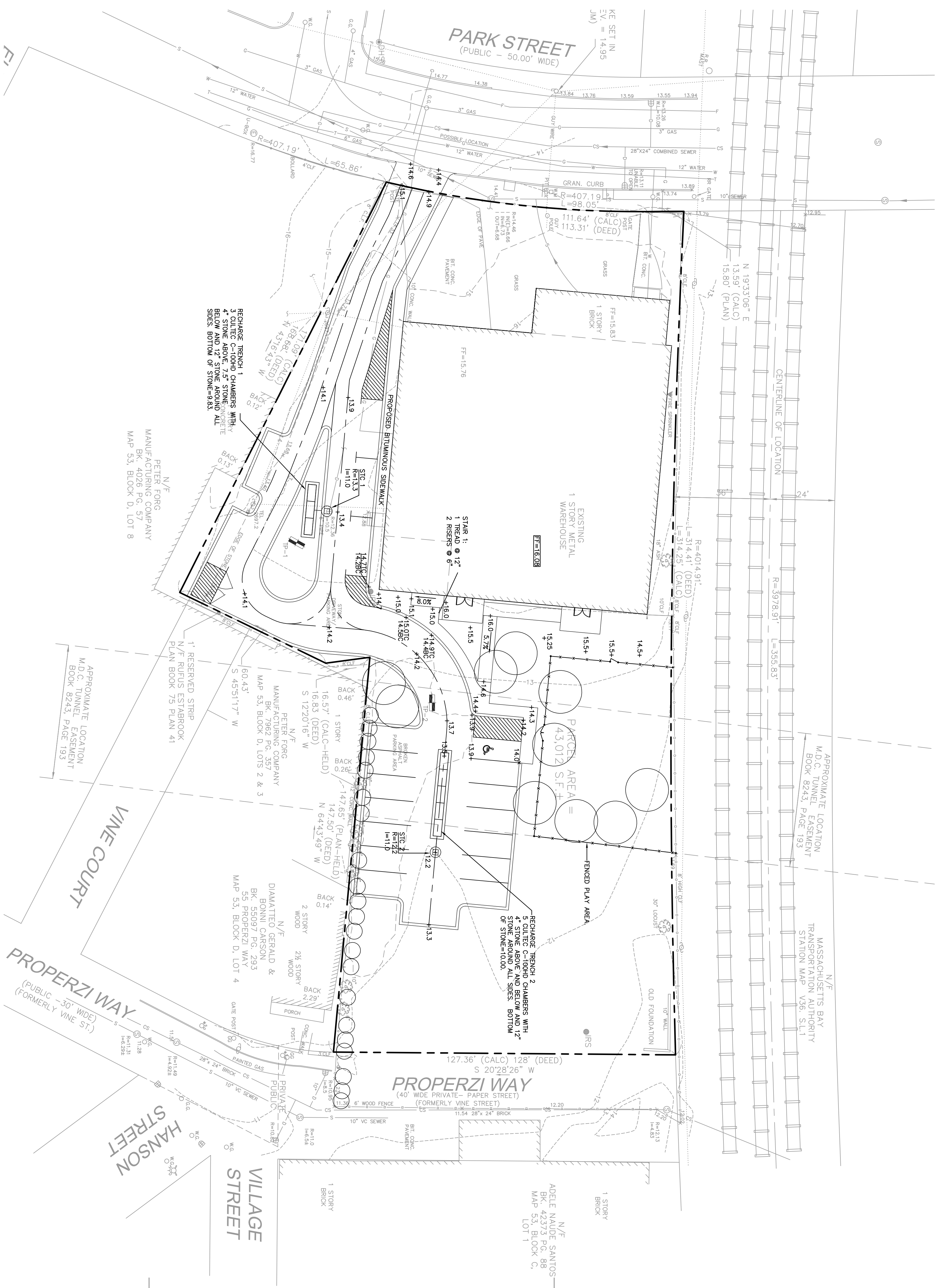


NOTES

- ESHOW=ESTIMATED SEASONAL HIGH GROUNDWATER
- ALL TESTS CONDUCTED ON 11-4-2011
- TESTS CONDUCTED BY DESIGN CONSULTANTS, INC.

SOIL TESTS

NOT TO SCALE



BIGELOW CO-OP DAYCARE

44 PARK ST., SOMERVILLE MA 02143

BROWN FENOLLOSA ARCHITECTS INC
 197 Broadway Arlington MA 02474
 P 781 641 9500 info@brownfenollosa.com

Structural Engineer:

Webb Structural Services
 291 Pearl Street
 Reading MA 01867
 p. 617.512.2739

Civil Engineer:

Design Consultants, Inc
 120 Middlesex Ave, Suite 20
 Somerville MA 02145
 p. 617.776.3350

Mechanical Engineer:

Shakar & Assoc. Inc
 775 Pleasant St., #14
 East Weymouth, MA 02189
 p. 781.337.8347

Rev. Date: Remarks:

1	11.09.11	Rev. Drainage
2	12.12.11	Reed Entrances, Driveway

Grading, Drainage and Utilities Plan

Date: 11.01.11
 Scale: AS NOTED
 Project Number: 2011-094
 Drawn by: WAK

C4.0