

Industrial
and Commercial
Real Estate

P.O. Box 171220
Boston, MA 02117
www.permanser.com

Tel: 617.424.0040
Fax: 617.424.0080
Mobile: 617.840.1484

PROCESSING

WHOLESALE & DISTRIBUTION

ALL FOOD GROUPS



AVAILABLE
11 Widett Circle
(New Boston Foodmart Development Corp.)
Boston, MA 02118
±25,000 s.f. Total Building

This property is part of a Cooperative located in the New Boston Food Market Development Corp. The New Boston Food Market, is one of the most strategically located food distribution centers in the metro Boston area. This property is less than a .3 miles from the Mass. Pike and Southeast Expressway, and minutes from downtown Boston, Boston Fish Pier and Logan Airport. Skilled labor market and serviced by public transportation.

SIMPLY A GREAT LOCATION LOCATION LOCATION LOCATION

- Zoning: I2
- HACCP Approved
- -5° F Holding Freezer (20')
- High Bay Cooler (20')
- Several Low Temp. Coolers with Floor Drains
- Tailgate Loading Docks
- Central Ammonia Refrigeration System
- Land for Trucks and Employee Parking
- Grease Traps

Exclusive Broker: Joel B. Miller

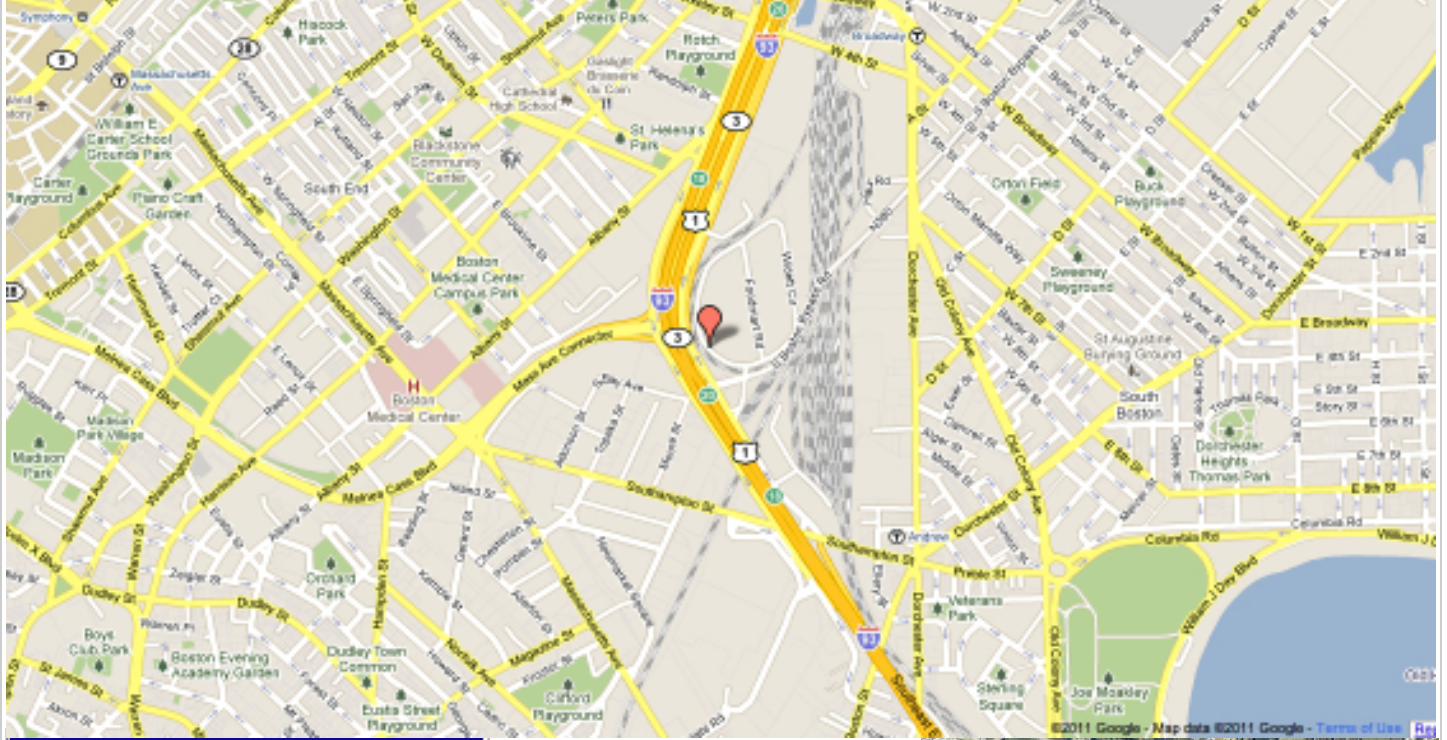
Office: 617-424-0040

Cell: 617-840-1484

Fax: 617-424-0080

Email: joel@permanser.com

www.permanser.com

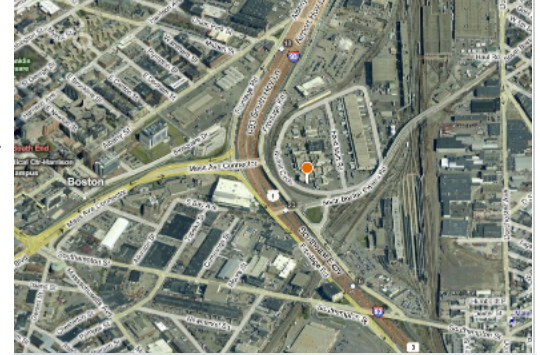


Exclusive Broker: Joel B. Miller
Office: 617-424-0040
Cell: 617-840-1484
Fax: 617-424-0080
Email: joel@permanser.com
www.permanser.com

Perishable Management Services
P.O. Box 171220
Boston, MA 02117
USA

Industrial Real Estate
Brokerage Services

Lessee shall be entitled to all services provided by New Boston Food Market Development Corp. such as refrigeration, maintenance to all refrigeration, heat to make 180° degree F hot water, property damage insurance, real estate taxes, all exterior building maintenance, and all other services provided to all Owners and Lessees under the Master Lease. The Lessee will be responsible for paying for all utilities separately metered to the premises i.e., gas, water & sewer, electricity, and maintenance except for those maintenance services provided under the Master Lease.



Central Refrigeration Plant

The information contained herein has either been given to us by the owner of the property or obtained from sources that we deem reliable. We have no reason to doubt its accuracy but we do not guarantee it. This information is subject to change and this offering can be withdrawn without notice