

AS PLAN WAS PREPARED IN ACCORDANCE WITH THE  
 RULES AND REGULATIONS FOR RECORDING, ADOPTED BY  
 THE REGISTERS OF DEEDS IN 1978 AND AMENDED  
 JANUARY 12, 1988.

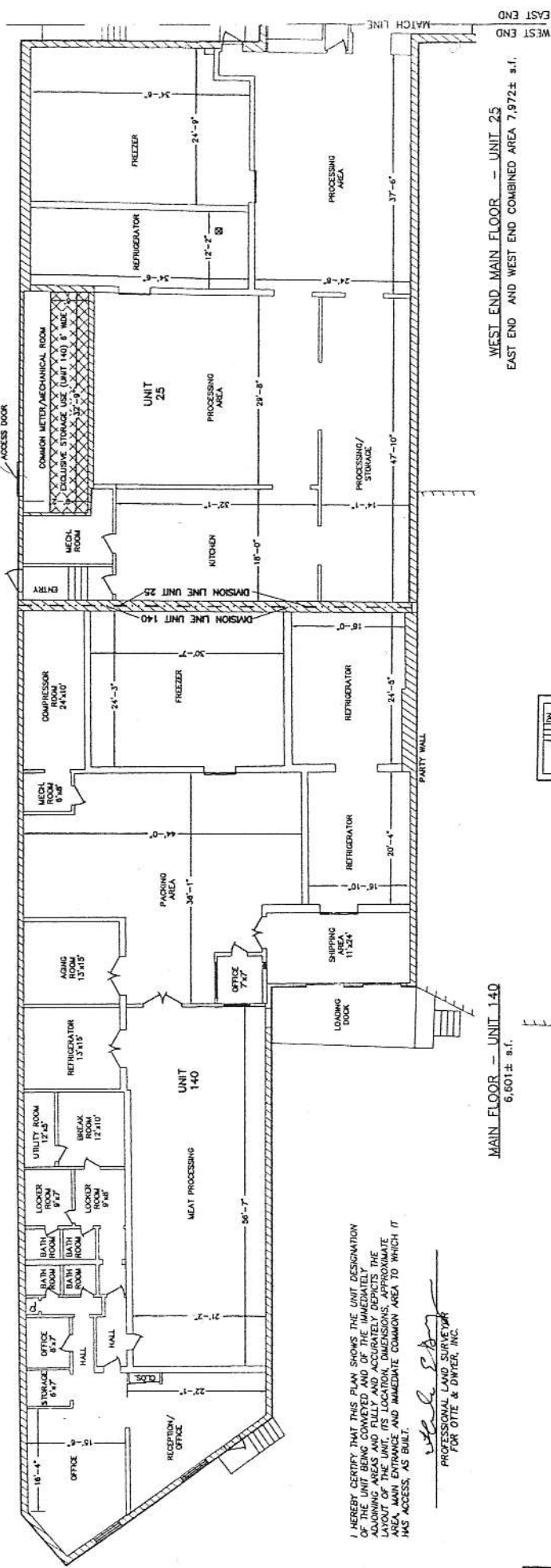
*Walter S. Dwyer, Jr.*  
 PROFESSIONAL LAND SURVEYOR  
 FOR OTTE & DWYER, INC.

*Walter S. Dwyer, Jr.*  
 PROFESSIONAL LAND SURVEYOR  
 FOR OTTE & DWYER, INC.

I HEREBY CERTIFY THAT THIS PLAN FULLY AND ACCURATELY DEPICTS  
 THE LAYOUT, LOCATION, UNIT NUMBER AND DIMENSIONS OF THE UNITS  
 SHOWN AT THE NEWMARKET CONDOMINIUM, AS BUILT.

DETAIL OF STORAGE LOFT AREA  
 ABOVE COMMON METER/MECHANICAL ROOM

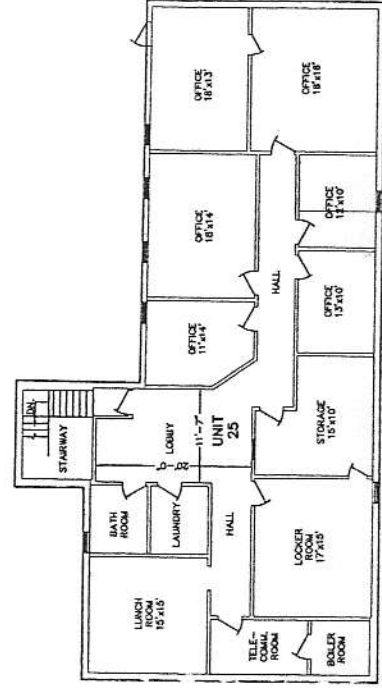
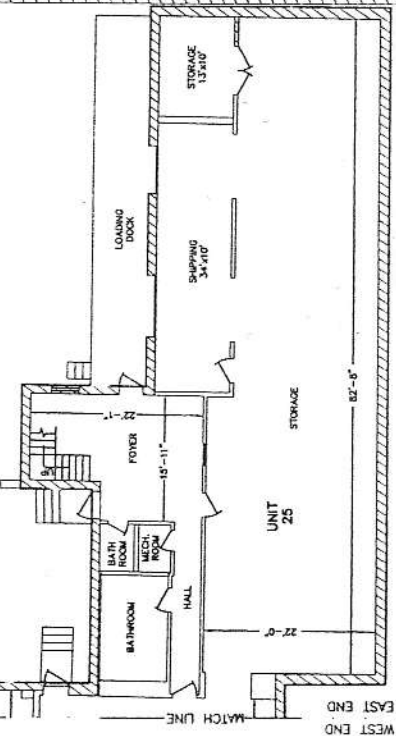
STORAGE LOFT (EXCL. USE UNIT 25)



MAIN FLOOR — UNIT 140  
 6,601± s.f.

I HEREBY CERTIFY THAT THIS PLAN SHOWS THE UNIT DESIGNATION  
 OF THE UNITS BEING CONVEYED AND OF THE IMMEDIATELY ADJACENT  
 UNITS, AND THE LAYOUT, LOCATION, DIMENSIONS, APPROXIMATE  
 AREA, MAIN ENTRANCE AND IMMEDIATE COMMON AREA TO WHICH IT  
 HAS ACCESS, AS BUILT.

*Walter S. Dwyer, Jr.*  
 PROFESSIONAL LAND SURVEYOR  
 FOR OTTE & DWYER, INC.



CONDOMINIUM FLOOR PLAN  
 NEWMARKET CONDOMINIUM

LOCATED AT  
 19-25 HOWARD STREET  
 140 HAMPDEN STREET  
 ROXBURY, BOSTON, MASS.

BY  
*Walter S. Dwyer, Jr.*

LAND SURVEYORS

196 CENTRAL STREET SAUGUS, MASS.  
 P.O. BOX 982 (781) 233-8155  
 SCALE: 1/8" = 1' NOVEMBER 11, 2008  
 REVISED: 12-13-05 FINAL REVISIONS.



I HEREBY CERTIFY THAT THIS PLAN FULLY AND ACCURATELY DEPICTS THE LAYOUT, LOCATION AND NAME OF THE "NEWMARKET CONDOMINIUM" AS BUILT AND FULLY LISTS THE UNITS (25 & 140) CONTAINED THEREIN.

*W. H. Dwyer, Inc.*  
 PROFESSIONAL LAND SURVEYOR  
 FOR OTTE & DWYER, INC.

I HEREBY CERTIFY THAT THIS PLAN FULLY AND ACCURATELY DEPICTS THE LAYOUT, LOCATION AND NAME OF THE "NEWMARKET CONDOMINIUM" AS BUILT AND FULLY LISTS THE UNITS (25 & 140) CONTAINED THEREIN.

*W. H. Dwyer, Inc.*  
 PROFESSIONAL LAND SURVEYOR  
 FOR OTTE & DWYER, INC.

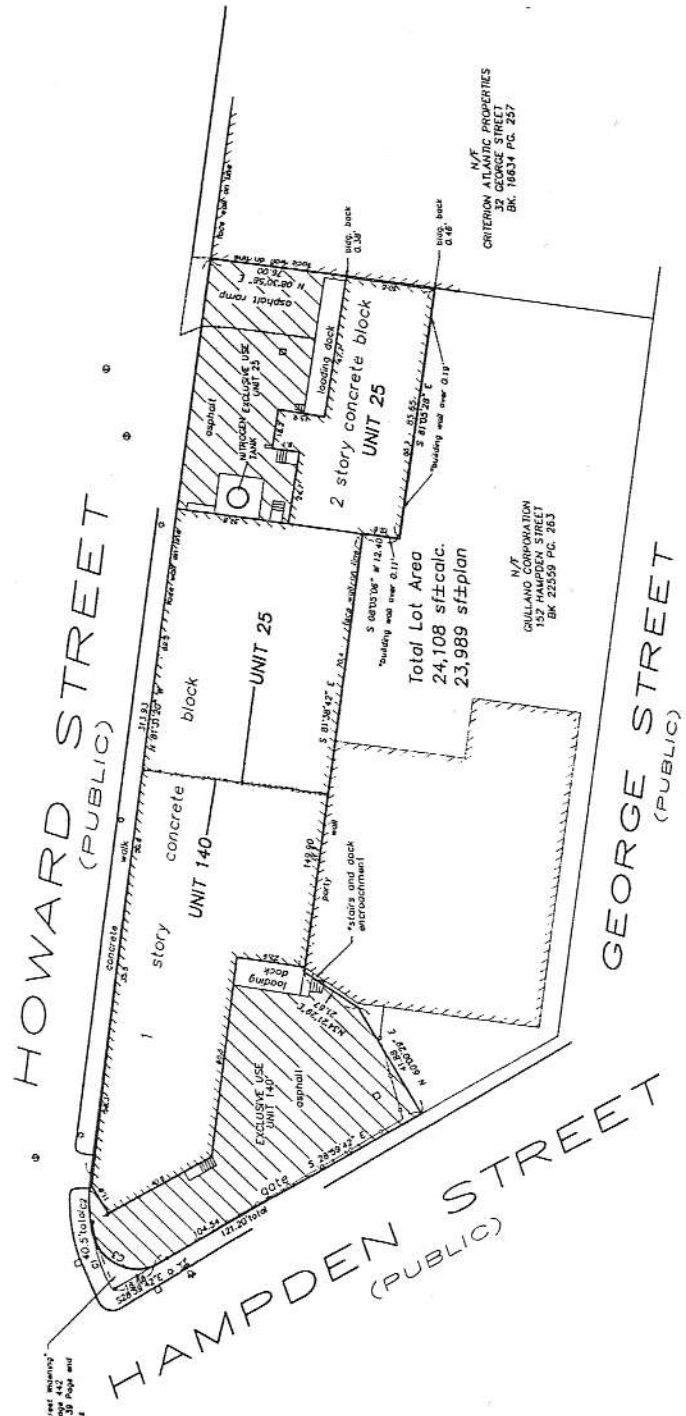
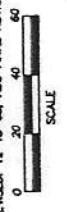
THIS PLAN WAS PREPARED IN ACCORDANCE WITH THE RULES AND REGULATIONS FOR RECORDATION BY THE REGISTER OF DEEDS IN 1978 AND AMENDED JANUARY 12, 1988.

*W. H. Dwyer, Inc.*  
 PROFESSIONAL LAND SURVEYOR  
 FOR OTTE & DWYER, INC.

CONDOMINIUM SITE PLAN  
**NEWMARKET CONDOMINIUM**  
 LOCATED AT  
 19-25 HOWARD STREET  
 140 HAMPDEN STREET  
 ROXBURY, BOSTON, MASS.

BY  
**W. H. Dwyer, Inc.**

LAND SURVEYORS  
 184 CENTRAL STREET  
 P.O. BOX 982  
 SAUGUS, MASS. (781) 233-8155  
 SCALE: 1"=20'  
 NOVEMBER 10, 2005  
 REVISIONS: 12-13-05, ADD FINAL REVISIONS



| CURVE | CHORD | ANGLE |
|-------|-------|-------|
| C1    | 21.38 | 63.67 |
| C2    | 18.84 | 63.67 |
| C3    | 26.10 | 78.00 |

**LEGEND**

- CHAIN LINK FENCE
- CURVE
- CONCRETE
- EXCLUSIVE USE
- HYDRAULIC
- LIGHT POLE
- ROLLBAR

Neighborhood Street Inventory  
 Book 1177 Page 442  
 Plan Book 8139 Page 441